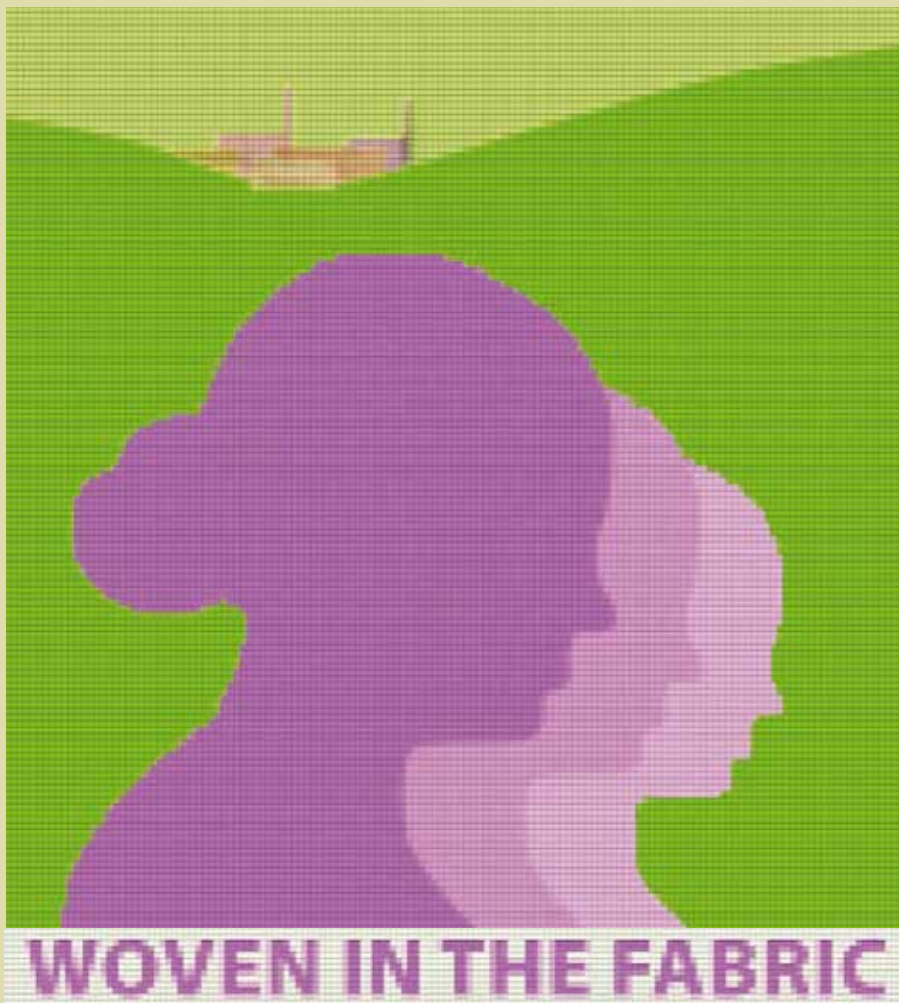


SQUARE PEG PRODUCTIONS PRESENTS



WOVEN IN THE FABRIC

**A PLAY ON THE LIVES OF MARTHA CROSSLEY OF DEAN CLOUGH, HALIFAX
AND LAVENA SALTONSTALL, HEBDEN BRIDGE AND HALIFAX SUFFRAGETTE
BY ANNA CARLISLE**

A PROMENADE EVENT FROM SQUARE CHAPEL TO HALIFAX MINSTER

AUGUST 14 – 22 PERFORMANCES DAILY (EXCEPT AUG. 16) AT 2 PM

WWW.SQUAREPEGPRODUCTIONS.CO.UK TICKETS: SQUARE CHAPEL 01422 349422

WOVEN IN THE FABRIC

Performances

Times 2 pm daily 14-22 August (excluding 16 August)

Venue starts at Square Chapel churchyard, 10 Square Road Halifax HX1 1QG and continues to Halifax Minster, Causeway Halifax HX1 1QL

Tickets £10 (concessions £7, under 5s free) to include refreshments

Tickets may be purchased by telephone or in person from Square Chapel box office: 01422 349 422 (information: www.halifaxfestival.co.uk)

Promenade performances own seating permitted

Wheelchair access feasible (enquire upon ticket purchase)

Getting there

by road A58 or M62/A629 from Leeds or Manchester, or A646 from Hebden Bridge

by rail Northern Rail Leeds/York-Manchester/Blackpool lines

by coach National Express to Halifax (X561 or X564)

Square Peg Productions

3 Bankside, Hebden Bridge HX7 8BX

07776 196083 • info@squarepegproductions.co.uk • www.squarepegproductions.co.uk

Previous work by Square Peg Productions

A Pearl in the Sands Swarthmoor Hall Ulverston 2008 • **Secretly Pleased** Land Farm Garden Colden 2007/8 • **An Eclipse of the Sun** Middleham Castle 2006 • **An Owl in the Desert** Skipton and Brougham Castles 2005/6

'Captivating: one of the best outdoor productions ever. The actors and their original style were enchanting.' *'about the best theatrical event I have ever been to ...'* *'Loved the sense of being amongst the play and its atmosphere.'*

supported by:



Calderdale
Council

Community Services Small Grants